

PRESSOSTATS WITH NON-ADJUSTABLE DIFFERENTIAL



USE

-Pressure controls for fluids and inert gases, suitable for compressors, autoclaves, control of lubrication circuits, steam boilers, etc. If used as control pressostats verify that max. pressure does not exceed max. sensitive element pressure.

INSTALLATION AND OPERATION

-Stainless steel diaphragm sensitive element
-Female G 1/4" connection (17mm. key).

TECHNICAL FEATURES

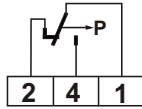
-Elements in contact with the fluid are stainless steel.
-Base, cover and knob in V0 self-extinguishing, antishock thermoplastic material.
-PVC grommet for cable entry

HOMOLOGATION AND STANDARDS

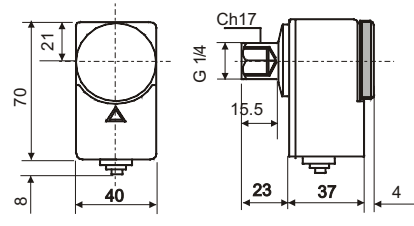
-Complies with CEI EN60947-5-1 standards

ELECTRICAL FEATURES

-Snap action SPDT microswitch with AgCdO contacts.
-When pressure rises: 1-2 opens 1-4 closes



Nominal insulation	Ui 380V~		
Continuous duty nominal current	Ith 15A		
Operating nominal current Ie:	220V~ 250V~ 380V~		
Resistive load	AC-12	-	10A 10A
Inductive load	AC-15	-	2.5A 1.5A
Continuous nominal current	DC-13	0.2A	- -



ERGIO CONTROLES.-La Rioja 511, Cordoba, Argentina. CP: X5000EVK. Tel/Fax: 0351-4250787. http://www.ergiocontroles.com

TYPE	RANGE bar	Differential bar *	Max sensitive element pressure bar	Max fluid temperature °C ♦	Maximum pressostat body temperature °C ●	Protection	Weight each Kg	Box pcs. No
B01A	0,7 to 3	0.3 to 0.5	6	120	-35 to 80	IP 40	0.15	
B01B	2 to 5.5	0.5 to 0.7	7	120	-35 to 80	IP 40	0.15	
B01C	3 to 7	0.5 to 0.7	9	120	-35 to 80	IP 40	0.15	
B01D	4 to 15	0.8 to 1.2	18	120	-35 to 80	IP 40	0.15	

EXECUTION WITH INTERNAL REGULATION WITH POSSIBILITY TO SEAL CASING AFTER CALIBRATION

TYPE	RANGE	Differential	Max sensitive element pressure	Max fluid temperature	Maximum pressostat body temperature	Protection	Weight each
B01ARI	0,7 to 3	0.3 to 0.5	6	120	-35 to 80	IP 40	0.14
B01BRI	2 to 5.5	0.5 to 0.7	7	120	-35 to 80	IP 40	0.14
B01CRI	3 to 7	0.5 to 0.7	9	120	-35 to 80	IP 40	0.14
B01DRI	4 to 15	0.8 to 1.2	18	120	-35 to 80	IP 40	0.14

- * The differential must be deducted from the range value.
- ♦ In the case of fluid temperatures higher than the maximum allowed, connect a metallic spiral between the pressure switch and the pipe to facilitate heat dispersion.
- N.B. Transport and storage temperatures are equivalent to the max. allowable pressostat body temperature.

1bar = 100KPa

ACCESSORIES

-G 1/2 cable gland in V0 self-extinguishing, antishock, thermoplastic materialcode**303298L**

SPECIAL EXECUTIONS (for large quantities, ask for offer)

-Male G 1/4 " connection **B01...4**

EXAMPLE: ELECTRICAL WIRING

